

User Guide

www.volcanoelectronix.com

Eruption-1 & Eruption -2

Motorized Pop-Up solution

Thanks for choosing **Volcano- Elegant and Affordable Solutions**. Eruption is a motorized Pop-Up solution for power and charging.

Functionality and Technical Data

Specification	Eruption-1	Eruption-2
Wireless Charging	Qi - 15W	Qi-15W
Modules number	3 (2X Power + USB-C +A)	4 (3X Power + USB-C +A)
Output power sockets	250V	250V
USB module – A + C	Type-A: 5V 3A, 9V 3A, 12V 2.5A, 20V 1.5A Type-C: 5V 3A, 9V 3A, 12V 2.5A, 15V 2A, 20V 1.5A Type-A + Type-C: 5V 2.4A total)	Type-A: 5V 3A, 9V 3A, 12V 2.5A, 20V 1.5A Type-C: 5V 3A, 9V 3A, 12V 2.5A, 15V 2A, 20V 1.5A Type-A + Type-C: 5V 2.4A total
Input Power	250	250V
Motor consumption Wattage	0.37 max	0.37 max
Cover Diameter	Ø88.6mm	Ø88.6mm
Cutout Diameter	Ø95mm	Ø95mm
Pop-Up Height (when open)	170mm	220mm
Under counter depth when closed	405mm	455mm
Recommended counter thickness range	10mm-45mm	10mm-45mm
Power supply cord at the bottom	2m	2m
Designed to use	Indoor only	Indoor only
Operating temperatures range	+5 to +45 Deg. Centigrade	+5 to +45 Deg. Centigrade
Installation by	licensed electrician	licensed electrician
Net unit Weight	1.8Kg	2Kg
Packed unit weight	2.5Kg	2.8Kg
Accessories	Locking Ring, this Guide	Locking Ring, this Guide
Certifications	CE, EMC, RoHS	CE, EMC, RoHS

***Eruption-1 and Eruption-2** are designed for cell phones with Qi compatible wireless charging only. Phone cases that contain metal or a magnet or cases that are thicker than 3mm will cause charging interference and should be removed before charging.*



***Eruption-1 and Eruption-2** modules are for power and charging only – not for DATA and Multimedia use.*

Safety and proper use

- For indoor use only.
- Before installing or removing the unit, disconnect to unit from power.
- When using the wireless charger, do not place metal objects, magnets, or any storage device near the charger.

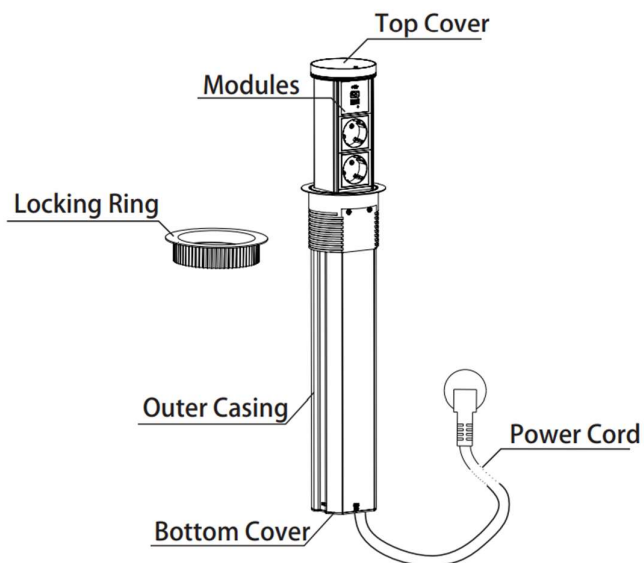


It may cause data loss or corruption.

- Do not insert any foreign objects into the sockets.
- Use only a compatible power plug when connecting to the power socket.
- Use only standard charging USB A and USB-C cables.
- Medical devices should not be near the charger within a 20cm radius.
- Do not expose to water, moisture, corrosive materials, or extreme temperatures (below 4° C or above 35° C)
- Do not open/ disassemble the unit or try to repair it.
- Service allowed to be done only by professional electrician when any malfunction occurs.

Eruption Parts and Functions

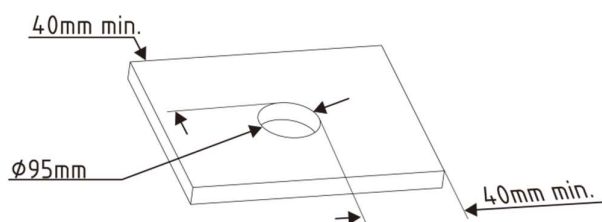
#	Part	Operation
1	Top Cover and Charging Surface - 15W	Push to turn on the unit. Can set your mobile device on the charging surface.
2	USB -C & USB-A charging module	Connect your device for charging using standard cables
3	Power socket modules	2 power sockets in Eruption-1, 3 power sockets in Eruption-2. AC Power supply, this socket module is changeable to fit the local standard power plugs
4	Locking Ring	Fix and tighten the Eruption unit from the table bottom side.
5	Outer Casing	Outer enclosure
6	Bottom cover	Bottom cover of the unit
7	Power Cord	Connected to the Eruption bottom part. Connect to the power main after the Eruption is fixed to the table and ready to use.



Install the Eruption

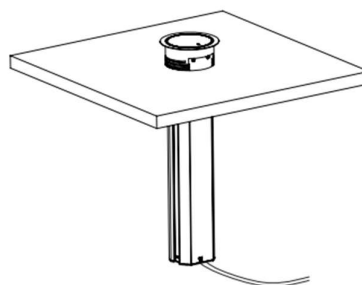
1. Cut-out opening

Make a 95mm circular grommet hole on the desired surface. Make sure to have enough space below for the unit to fully retract and for the cables to run unhindered from the base of the unit. The recommended space underneath the countertop should be 520mm or more. The required distance between the mounting hole and power supply source should be within 1.5m.



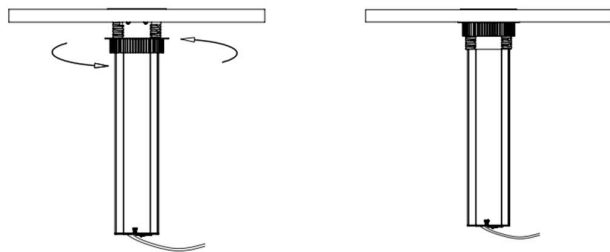
2. Mounting the unit

Feed power cord through the grommet hole until the full length of the cable has passed through (Be careful to avoid damage to the power cord). Mount the unit into the cut-out and be sure it is fully leveled with the surface.



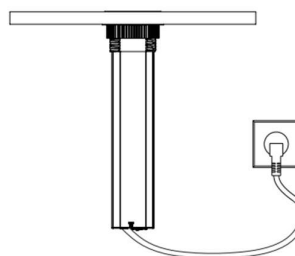
3. Secure the product

When in place to the preferred direction, secure the unit from under the desk by screwing back the locking ring. (Please note that when the locking ring is skewed, it will get stuck. It needs to be unscrewed and re-tighten after alignment.)



4. Connect to power supply

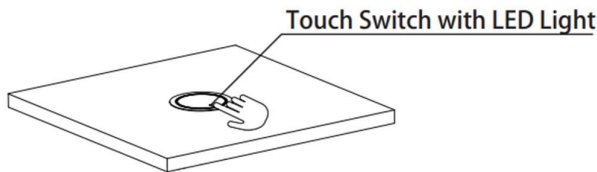
After the installation is completed, plug in the power cord into an applicable power outlet and the unit is ready to use.



Eruption Operation

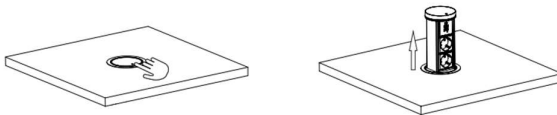
1. Initiate the unit

Press and hold the touch switch on the top cover for 3 seconds until the LED light turns blue, the Eruption is ON- ready to use.



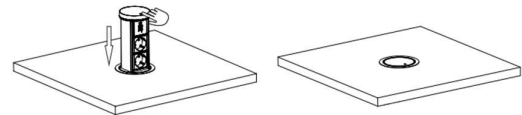
2. Intelligent Eruption

- When the Eruption is ON, press the switch again and the unit will raise until fully elevated.
- The unit can be paused during a raise operation by simply pressing on the touch switch.
- If the unit encounters an obstruction during the raise operation, the anti-force function will activate, and the unit will be paused in the current position.
- Once the obstruction has been cleared, the unit can be elevated by pressing on the touch switch again. Connect the USB cables and plug in the power cords as desired.



3. Intelligent Retraction

- Disconnect the USB cables and unplug the power cords.
- After the unit is fully elevated, press the touch switch to activate the retraction operation.
- The unit can be paused whilst declining.
- If the unit is obstructed during retraction operation, the anti-trap safety function will reverse the direction of the travel path, and the unit will raise slightly and pause.



4. Wireless charging

- Place the device gently on top of the cover (Avoid accidental contact with touch switch) and charge. Compatible with all Qi-enabled devices.
- Make sure the center of the device is aligned over the center of the charging base.
- Ensure that there are no metallic foreign objects on the charging pad.
- Remove the thick device case, if any. It may block the wireless signal.



Limited Warranty

- Period: one year
- Warranty Cover: defects in the product materials and workmanship.
- Not Covered: Products that were connected and or used not according to this guide.
Changes in the product that were done by the customer.
- Who does the warranty cover: The original purchaser. This limited warranty is not transferable by dealers or distributors to the end user.
- Remedies: Volcano will repair, replace, or provide a refund for products that are under the warranty period and under the above mentioned. If the product is obsolete, Volcano will provide the next generation product or a refund. Volcano will not provide a compensation with a value higher than the product purchasing price and within what is permitted in the law.